



Q-BEEZ



**INSTRUCTION
MANUAL**



Q-BEEZ

Contents

How does it work compared with other walk-off mats?	4
Available Colours	5
Patterns	6
Installing a loose-lay mat	8
Preparation prior to installation	8
Site and screed preparation for a recessed mat	9
Gluing the mat inside the recess	11
Cutting the tiles	12
Cleaning of Q-Beez	13
What can go wrong?	14
The truth about dirt	14
Technical Specifications	15
In the box	15
Warranty	16
Tests & certificates	16
CE Declaration	17

How does it work compared with other walk-off mats?

As per below image, Q-Beez feature 2 different zones. The first zone is the **drying/scraping zone**. This Nylon or Polyamide insert will scrape and dry the soles of the shoes. The second zone is the **collection zone** to collect and contain the dirt.



Available Colours

Anthracite



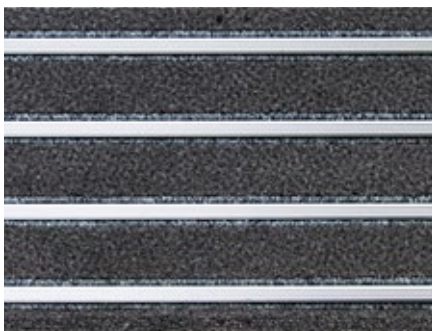
Anthracite ALU (only on 23,5 × 75 cm tiles)



Grey



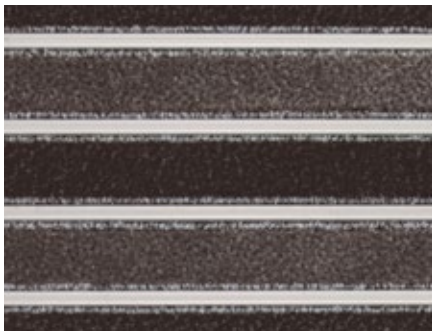
Grey ALU (only on 23,5 × 75 cm tiles)



Combo (only on 23,5 × 75 cm tiles)

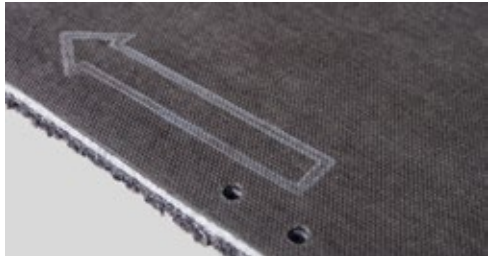


Combo ALU (only on 23,5 × 75 cm tiles)



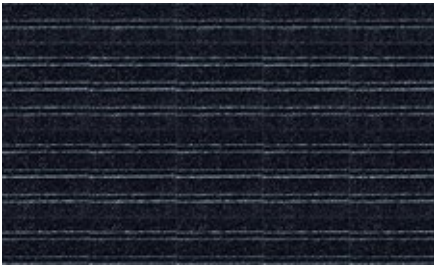
Patterns

There are a number of ways in which the tiles can be laid to create specific patterns: Attention should be paid to the arrow on the reverse of the tile which indicates the pile direction.



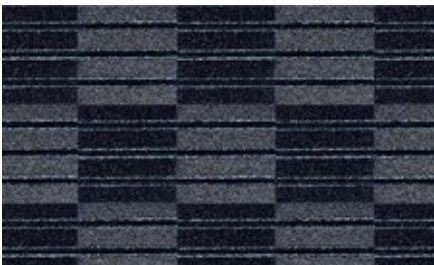
Uniform pattern in 1 colour

The Q-Beez tiles are installed in the same direction to create a uniform pattern in either Anthracite or Grey tiles.



Uniform pattern in 2 colours

The Q-Beez tiles are installed in the same direction to create a uniform pattern alternating between Anthracite and Grey tiles



Alternating pattern in 1 colour

The Q-Beez tiles are installed in alternating directions in either Anthracite or Grey tiles.



Alternating pattern in 2 colours

The Q-Beez tiles are installed in alternating directions in both Anthracite and Grey tiles.





Installing a loose-lay mat

The tiles are joined by means of a clip system. A pre-punched hole is visible on each of the corners on the reverse of the tile. The rectangular tiles will feature additional holes in the centre of the tile as the rectangular tiles can only be laid in a brick design.

It is not necessary to glue the tiles down unless there is going to be lightweight wheeled traffic passing over the mat.

It is recommended to secure them either with double sided tape or a light Aluminium frame to prevent overall movement of the mat. When connecting the clips to the tiles, make sure the joints are firmly pressed together.

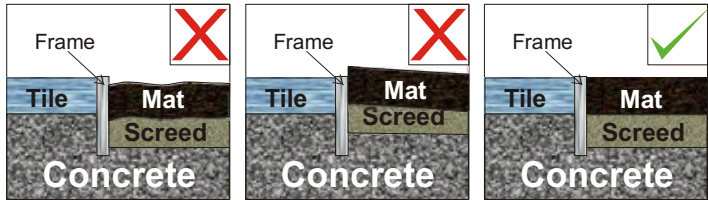
Preparation prior to installation

It is important to acclimatize the Q-Beez tiles for at least 24 hours prior to installation by placing them, boxes opened up, on a flat surface in the room in which they will be installed. If possible, keep the room closed to allow for an ambient temperature of between 15°C and 25°C.

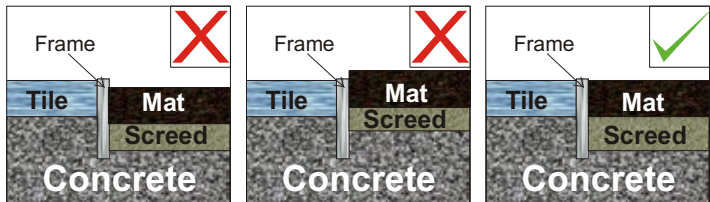
Site and screed preparation for a recessed mat

In order for a mat to be installed according to spec and to perform well beyond its intended life cycle, it is imperative to take note of the following when preparing the site for installation :

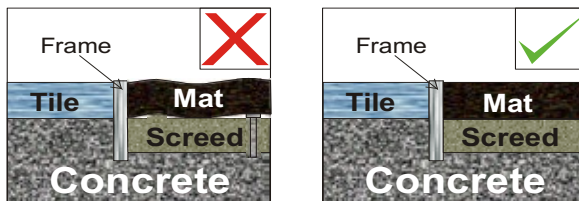
1. The screed needs to be even and level with a uniform depth across the full area of the recess within 1mm.



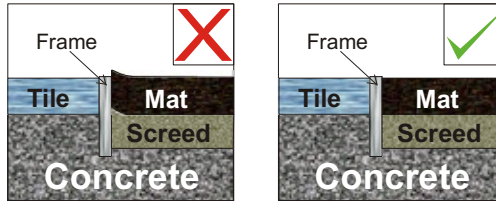
2. The depth of the recess should be within a tolerance of 1mm of the thickness of the mat to be installed. If the mat well is any deeper, a non-elastic underlay must be inserted to reduce the depth to the suitable height of 13 mm to 14 mm.



3. All debris needs to be removed from the screed prior to installation. Debris includes tile cement and grout left behind by contractors, temporary fasteners used to anchor frames or other structures, objects or materials that would render the screed surface uneven or irregular. The recess should be free of dust and therefore vacuum cleaning prior to installation is recommended, using a brush is insufficient.



4. All debris needs to be removed from the screed prior to installation. Debris includes tile cement and grout left behind by contractors, temporary fasteners used to anchor frames or other structures, objects or materials that would render the screed surface uneven or irregular. The recess should be free of dust and therefore vacuum cleaning prior to installation is recommended, using a brush is insufficient.



5. Mats cannot be installed in active entrances as the recess needs to remain clean for adhesives to bond properly. The unnecessary disturbance of the process of the mat installation could hinder the outcome of the quality of the installed mat. There are some steps that are very time frame specific such as the application of adhesives and the subsequent bonding of the mat to the screed. Any disruptions during these critical stages could be disastrous. Other stages are very sensitive to movement of the mat such as when marking and trimming a mat to fit a recess.
6. Mats cannot be installed over wet or uncured screeds due to the presence of excessive moisture that would render the bonding agents ineffective.

Gluing the mat inside the recess

If Q-Beez are placed in a mat well and only foot traffic is anticipated, then it is not necessary to glue the tiles into the mat well. However, gluing is recommended in the event of lightweight wheeled traffic over the mat. For gluing, any wall to wall carpet adhesive would be suitable or double sided adhesive tape. Doors must be checked for sufficient play in height otherwise movement of the door will cause damage to the mat.

The following safety measures should be taken: Wear protective gloves and the correct protection to prevent inhalation of the fumes of the glue. Also, ensure that there is no work taking place nearby which could cause the the glue to ignite due to sparks or open fires. Welding, grinding or smoking are not allowed near the installation site. The glue used is a super contact glue (Adtech S 11) and 1 litre can cover +/- 3 m² (0.5 litre on the recess and 0.5 litre on the mat).

The tools you need for gluing are an empty 5 litre container where the side is cut open to contain the glue and a left over piece of carpet which will act like a brush to apply the glue. Also a rubber hammer or a heavy roller to apply pressure on top of the mat once it has been glued in.

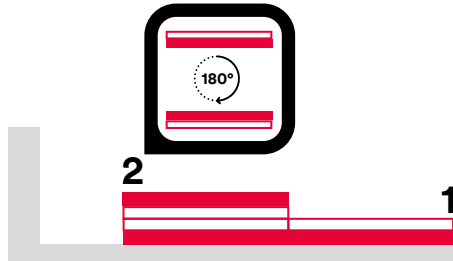
First you glue the recess allowing it to dry for about 20 minutes in a temperature of at least 20 degrees. If the temperature is lower the drying time will be longer. Then the glue has to be applied to the bottom of the mat. Also there the drying time has to be respected of +/- 20 minutes. Once in position you can hammer the tiles onto the floor or use the heavy roller.

Necessary tools for cutting: 1 straight edge that does not bend and maximum 10 mm thickness, Stanley knife, wooden cutting board for protecting the floor against cutting marks and a pencil. Make sure you have your health and safety file and that the area where you will be working is cordoned off and in rule with the safety specifications.

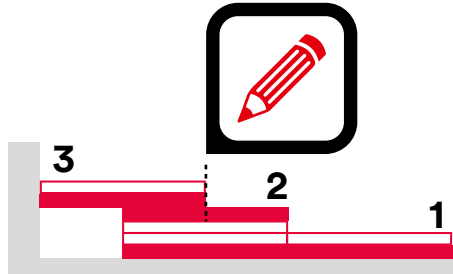
Cutting the tiles

To finish the room, the carpet tiles will in most cases have to be cut to measure by means of a Stanley cutter knife. Carpet tiles are cut on the backing.

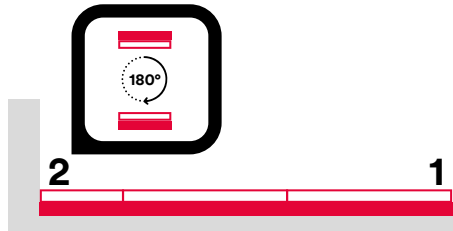
Place Tile 2 to be cut precisely on Tile 1.



Use an extra tile 3. Push the latter up to the wall over Tile 2. Now indicate on Tile 2 where you have to cut.



Finally, install the cut Tile 2 in the space between the wall and Tile 1.



Make sure that the floor covering just installed is sufficiently protected if the room still has to be used by other workers. So do not place any furniture on the floor during the installation. Move heavy furniture on hardboard plates to prevent the carpet from getting damaged.

Cut to size

To cut the tile with aluminium inserts, you would cut the textile direction of the tile with a Stanley knife. The other direction should be cut by an angle grinder using a 1 mm thick blade. Each aluminium bar has to be grinded separately over the entire length from the top down. Then in one solid move, the angle grinder will cut the carpet passing the aluminium bars which are already cut.

Cleaning of Q-Beez

The care and maintenance of Q-Beez is essential to maintain the durability and appearance of the mat. Soiling and general wear has a negative impact on the appearance of the entrance mat and should be prevented by instituting an effective cleaning program. A regular cleaning program prevents premature replacement of the entrance mat.

Installation of an exterior mat such as Super Scraper will reduce the soiling of the Q-Beez. Avoid excessive use of cleaning products. If they are used, then ensure they are washed out of the mat thoroughly as any residue can attract dirt.

Vacuuming

Regular vacuuming with a sufficiently powerful vacuum cleaner and brush is essential to maintain the condition of the mat. Heavy traffic areas should be vacuumed more intensively than lighter traffic areas. Should a claim be lodged and dirt makes up more than 10% of the weight per m², the warranty will become null and void.

Stain removal

Stains should be removed immediately (before it dries) with a neutral stain remover. Chewing gum can be removed with ice by turning the gum to a solid and then removing it with a knife or scraper.

What can go wrong?

Over the years Debomat has worked with a number of distributors and customers and has valued experience of installations and the various obstacles and issues that arise. Below please find some typical examples and their relevant solutions.

When I put 2 tiles together in the same installation, the colour is different between them.

The reason for this is that one of the tiles has been turned around 180 degrees. It is important that the arrows on the backing are matched for both tiles in the same direction, which will ensure a colour match.

I have a piece that is damaged on the mat, what now?

Simply remove the damaged tile by releasing it from the clip and replace with a new tile.

When does it not work as well as it should?

Tests conducted by a certified testing laboratory have shown that a total of 7m is required before feet are completely dry and clean by walking over the mat. This can be achieved with a combination of outdoor matting like Super Scraper as realistically, not all buildings have the available space for one mat of this size.

The truth about dirt

- *It can cost more than 500 € to remove 500g of dirt, after it has been tracked into a building*
- *Up to 12kg of dirt can be tracked into a building by just 1000 people coming through an entrance each day over a 20 day work period.*
- *Without adequate matting, 42% of a floor's finish can be removed within the first 1.5m of an entrance after only 1,500 people have walked in.*

Technical Specifications

Q-BEEZ	21 × 21 cm	23,5 × 75 cm without Aluminum	23,5 × 75 cm with Aluminum	45 × 45 cm
Base	100 % Polypropylene needlepunch	100 % Polypropylene needlepunch	100 % Polypropylene needlepunch	100% Polypropylene needlepunch
Inserts	Tuft Polyamide 6.6	Tuft Polyamide 6.6	Tuft Polyamide 6.6, Aluminium	Tuft Polyamide 6.6
Backing	Bitumen	Bitumen	Bitumen	Bitumen
Weight	0,25 kg/piece	0,95 kg/piece	1,33 kg/piece	1,25 kg/piece
Height	14 mm	14 mm	14 mm	14 mm
Total weight	5.7 kg/m ²	5.7 kg/m ²	8 kg/m ²	6 kg/m ²
Fire Certificate	Cfl-S1	Cfl-S1	Cfl-S1	Cfl-S1
For 1 m² you need	24 tiles	6 tiles	6 tiles	5 tiles

In the box

Q-BEEZ

21 × 21 cm

- 24 Tiles
- 50 connection clips*
- 1 euro pallet contains 78 boxes or a total of 78 m²

Q-BEEZ

23,5 × 75 cm

- 6 Tiles
- 25 connection clips*
- 1 euro pallet contains 95 boxes or a total of 95 m²

Q-BEEZ

23,5 × 75 cm Alu

- 6 Tiles
- 25 connection clips*
- 1 euro pallet contains 95 boxes or a total of 95 m²

Q-BEEZ

45 × 45 cm

- 5 Tiles
- 0 connection clips*
- 1 euro pallet contains 40 boxes or a total of 40 m²

*connecting clips made in Polypropylene

Warranty

Debomat N.V. provides a 3 year warranty on the quality of Q-Beez entrance matting tiles. Debomat N.V. guarantees that all entrance matting will be free from any defects in material and workmanship at the time of sale, to original purchaser, under normal usage. Should any product, within the warranty period, prove to be defective in material and/or workmanship under normal usage, Debomat will replace the product at no additional charge (except as otherwise stated herein) provided that the product has not been subject to abuse, misuse, misapplication, neglect, accident, disaster, alteration or modification.

A maximum of 3,000 people per day over a 3 year period is guaranteed.

The warranty is effective if the mat no longer performs a cleaning function, within 3 years of purchase date. Normal wear and tear is not covered under the warranty.

NOTE

THE ABOVE WARRANTY IS THE ONLY WARRANTY PROVIDED BY DEBOMAT N.V. AND MAKES NO OTHER WARRANTY OF ANY KIND, EXPRESS OR IMPLIED, INCLUDING, BUT NOT LIMITED TO, ANY IMPLIED WARRANTY OF MERCHANTABILITY OR FITNESS FOR A PARTICULAR PURPOSE OR ANY OTHER WARRANTY OF ANY KIND.






UNDER NO CIRCUMSTANCES WILL DEBOMAT BE HELD LIABLE TO THE CUSTOMER FOR DAMAGES FOR LOST PROFITS, LOSS OF GOODWILL, OR OTHER INDIRECT, SPECIAL, INCIDENTAL, EXEMPLARY, PUNITIVE OR CONSEQUENTIAL DAMAGES ARISING OUT OF THE USE OF, OR INABILITY TO USE, SUCH PRODUCT PURCHASED, EVEN IF DEBOMAT HAS BEEN ADVISED, OR SHOULD HAVE KNOWN, OF THE POSSIBILITY OF SUCH DAMAGES, OR FOR ANY CLAIM BY ANY THIRD PARTY

Tests and certificates

Certificates are available on request: Fire classification to European standards, Anti-slip certificate, Reach compliant certificate which includes the VOC, wheelchair compliant, etc. We work with Centexbel in Ghent (associated with the Textile University of Ghent) which is fully licensed to carry out testing and produce certificates, so please do not hesitate to contact us.

CE declaration

1. Unique identification code of the product-type or product family:
067 010 008 500 – Q-Beez.
2. Type, batch or serial number or any other element allowing identification of the construction product: Entrance Matting.
3. Intended uses of the construction product, in accordance with the applicable harmonised technical specification, as foreseen by the manufacturer: Use as entrance floor covering(s) within a building according to the manufacturer's specifications and installation practices in accordance with EN 14041.
4. Name, registered trade name or registered trade mark and contact address of the manufacturer: Q-Beez, Frank Van Dyckelaan 12, 9140 Temse, Belgium.
5. Where applicable, name and contact address of the authorised representative (distributor, importer):
6. System of assessment and verification of constancy of performance of the construction product: AVCP system 4.
7. In case of the declaration of performance concerning a construction product covered by a harmonised standard: system 4 Not applicable.
8. In case of the declaration of performance concerning a construction product for which a European Technical Assessment has been issued: not applicable.

9. Declared performance:					
Essential characteristic	Performance	Harmonised technical specification	Essential characteristic	Performance	Harmonised technical specification
Reaction to fire EN 13501-1		EN 14041:2004 AC:2006	Electrical behaviour (dissipative) EN 1081 or ISO 10965	Not applicable	EN 14041:2004 AC:2006
Content of penta-chlorophenol EN 12673			Electrical behaviour (conductive) EN 1081 or ISO 10965	Not applicable	
Formaldehyde emissions ENV 717-1 or EN 717-2			Thermal conductivity EN 12524 or EN 12667	Not applicable	
Slip resistance «EN 13893»			Water-tightness EN 13553	Not applicable	
Electrical behaviour (antistatic) EN 1815 or ISO 6356	Not applicable		Intensive traffic in heavy commercial use		

10. The performance of the product identified in points 1 and 2 is in conformity with the declared performance in point 9. This declaration of performance is issued under the sole responsibility of the manufacturer identified in point 4

Signed for and on behalf of the manufacturer by:

De Bondt Tom, CEO

Temse, 01/01/2017

Debomat NV

Industriezone "De Zaat"
Frank Van Dijkelaan 12
9140 Temse
België

Telephone No.: +32 (0)3 711 11 85
Facsimile No.: +32 (0)3 711 11 07

info@debomat.be
www.debomat.com
www.logomat.be

